

# Town of Nassau Ecological Communities

Source: Ecological communities were delineated and identified through airphoto interpretation of 2004 imagery, map analysis, research of current and historical data, and as many field-visits as were practicable. Field work, mapping and database development were primarily conducted by David Hunt, PhD (Ecological Intuition & Medicine) and Sarah Parks, PhD (Amala Consulting). The methods were reviewed by Nick Conrad (NY Natural Heritage Program) and Rachel Riemann Akera (USFS). Additional information will be available on the Rensselaer Plateau Alliance webpage ([www.renssealaplateau.org](http://www.renssealaplateau.org)) and in the full Ecological Report. Mapping completed 2014.

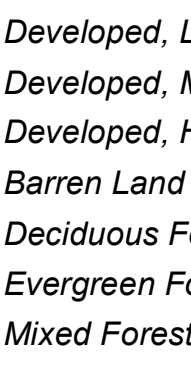
## Ecological Communities

**Within Plateau Boundary**  
(Code, Name, Acreage within Town Boundary)

- |     |                                   |                              |
|-----|-----------------------------------|------------------------------|
| B1  | Cliff Community                   | (7.31)                       |
| B2  | Pitch Pine-Oak-Heath Rocky Summit | (1.70)                       |
| B3  | Acidic Talus Slope Woodland       | (7.31)                       |
| C1  | Residential/Cleared Land Complex  | (359)                        |
| C2  | Mines & Quarries                  | (15.55)                      |
| C3  | Reservoir/Artificial Impoundment  | (2.89)                       |
| C4  | Farm Pond/Artificial Pond         | (3.50)                       |
| C6  | Powerline                         | (77.06)                      |
| C7  | Paved Land                        | (1.37)                       |
| C9  | Dense Residential Complex         | (26.14)                      |
| C10 | Industrial Land Complex           | (4.31)                       |
| F1  | Hemlock-Northern Hardwood Forest  | (3,326)                      |
| F2  | Beech-Maple Mesic Forest          | (963)                        |
| F3  | Appalachian Oak-Pine Forest       | (487)                        |
| F4  | Appalachian Oak-Hickory Forest    | (108)                        |
| F5  | Maple-Basswood Rich Mesic Forest  | (93.19)                      |
| F10 | Chestnut Oak Forest               | (16.60)                      |
| L4  | Mesotrophic Dimictic Lake         | (0.01)                       |
| L6  | Vernal Pool                       | (0.73)                       |
| L7  | Pond, unspecified                 | (6.54)                       |
| R1  | Rocky Headwater Stream            |                              |
| R2  | Marsh Headwater Stream            | (Streams not labeled on map) |
| R3  | Intermittent Stream               |                              |
| R4  | Backwater Slough                  |                              |
| R5  | Spring                            |                              |
| S1  | Successional Northern Hardwoods   | (537)                        |
| S2  | Successional Old Field            | (103)                        |
| S3  | Successional Shrubland            | (148)                        |
| S6  | Successional Southern Hardwoods   | (58.30)                      |
| S7  | Conifer Plantation, evergreen     | (29.46)                      |
| W1  | Shallow Emergent Marsh            | (45.87)                      |
| W2  | Straw Swamp                       | (24.24)                      |
| W3  | Deep Emergent Marsh               | (10.94)                      |
| W4  | Hemlock-Hardwood Swamp            | (96.22)                      |
| W5  | Red Maple-Hardwood Swamp          | (40.46)                      |
| W6  | Spurge-Fir Swamp                  | (9.62)                       |
| W7  | Sedge Meadow                      | (14.66)                      |
| W8  | Dwarf Shrub Bog                   | (2.04)                       |
| W10 | Black Spruce-Tamarack Bog         | (2.04)                       |
| W12 | Floodplain Forest                 | (6.21)                       |
| W14 | Inland Non-Calcareous Lakeshore   | (0.01)                       |
| W16 | Reedgrass Marsh                   | (0.43)                       |

## National Land Cover Database 2011

Derived from 30m satellite imagery, USGS: [www.mrlc.gov](http://www.mrlc.gov)

- Downloaded from <https://www.cambridge.org/core>. USGS, [www.usgs.gov](https://www.usgs.gov)
- 
- Open Water
  - Developed, Open Space
  - Developed, Low Intensity
  - Developed, Medium Intensity
  - Developed, High Intensity
  - Barren Land (Rock/Sand/Clay)
  - Deciduous Forest
  - Evergreen Forest
  - Mixed Forest
  - Shrub/Scrub
  - Grassland/Herbaceous
  - Pasture/Hay
  - Cultivated Crops
  - Woody Wetlands
  - Emergent Herbaceous Wetlands
  - Rivers & Streams (USGS NHD - [nhd.usgs.gov](https://nhd.usgs.gov))
  - Rensselaer Plateau Boundary
  - Town Boundaries
  - Streets
  - Parcel Boundaries (2011)

Disclaimer: This map is suitable for general land-use planning, but is not suitable for detailed planning and site design, or for jurisdictional determinations or legal determinations. Boundaries of ecological communities depicted here are only approximate.

The development of the Ecological Communities data was funded by the New York State Environmental Protection Fund through the Hudson River Estuary Program of the New York State Department of Environmental Conservation.

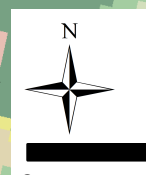
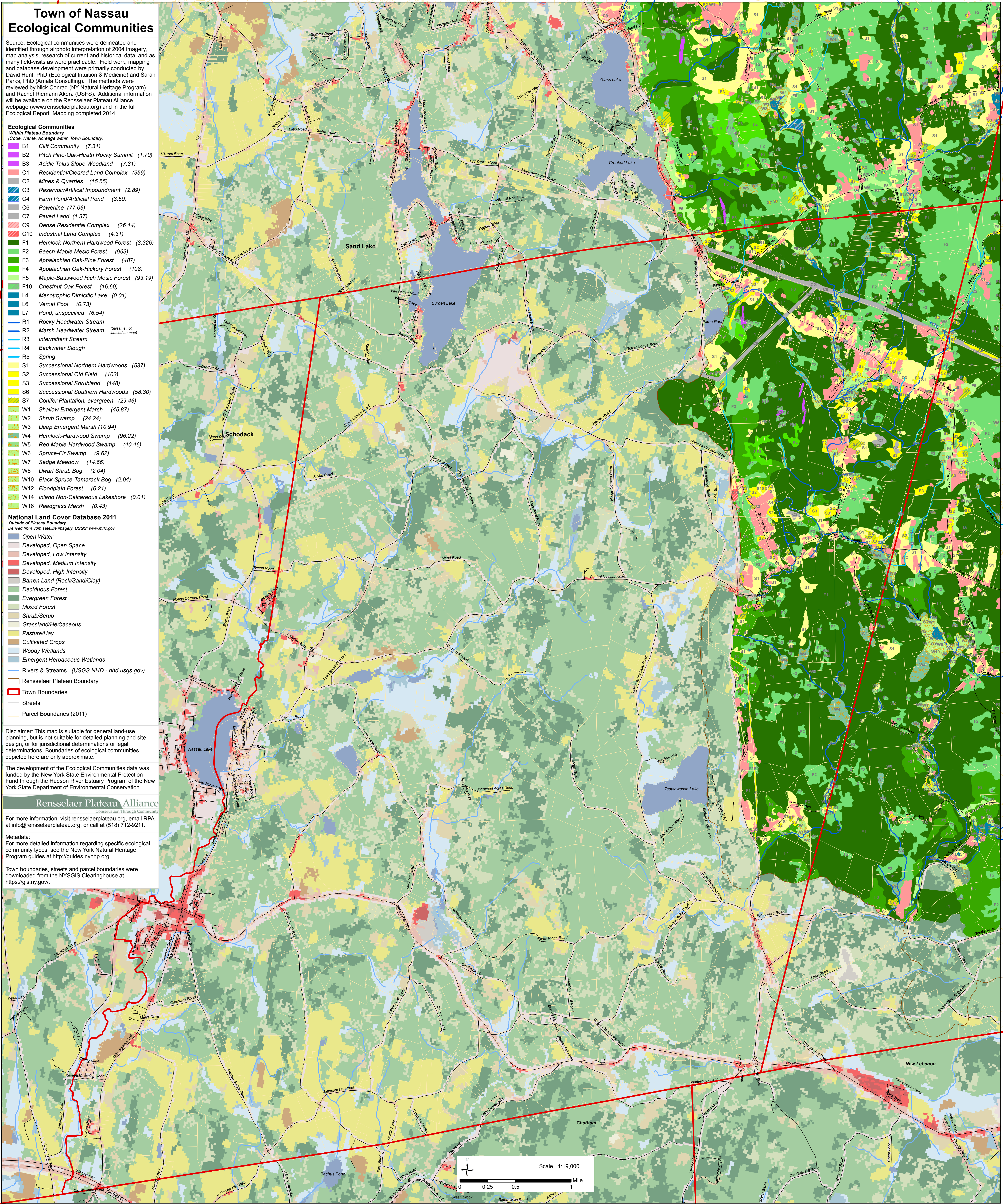
## Rensselaer Plateau Alliance

## Conservation Through Community

For more information, visit [rensselaerplateau.org](http://rensselaerplateau.org), email RPA at [info@rensselaerplateau.org](mailto:info@rensselaerplateau.org), or call at (518) 712-9211.

Metadata:  
For more detailed information regarding specific ecological community types, see the New York Natural Heritage Program guides at <http://guides.nynhp.org>.

Town boundaries, streets and parcel boundaries were downloaded from the NYSGIS Clearinghouse at <https://gis.ny.gov/>.



Scale 1:19 000

110,000

1 Mile