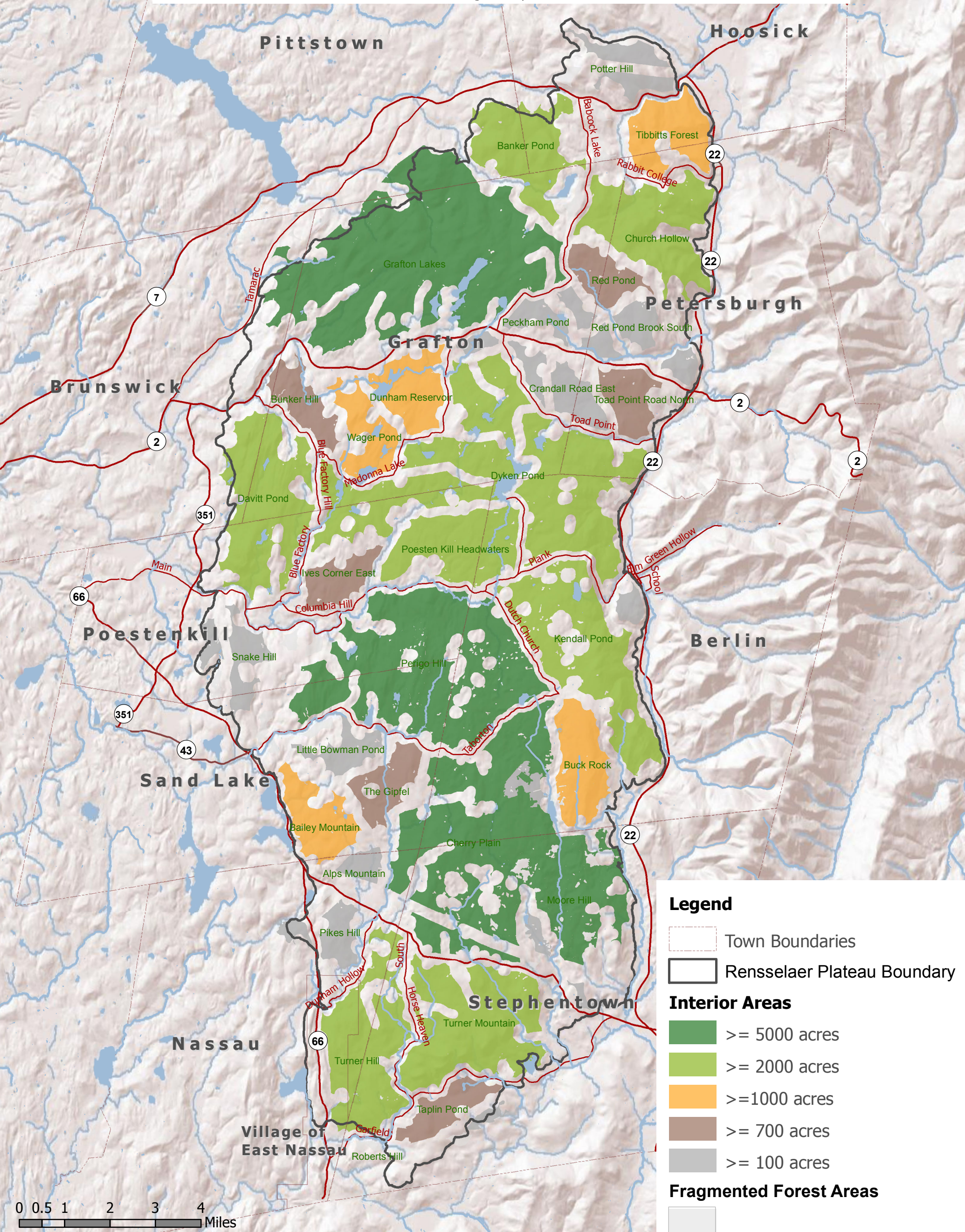


Forest interior are areas of high ecological integrity with little or no human disturbance. In such areas, natural features and processes are likely to be able to sustain themselves over the long term. Forest interior areas are important for disturbance-sensitive forest-interior animals. Many of these sites are among the largest in our Eastern New York bioregion and are considered to be "conservation targets" within this region. In some cases, such as the Dyken Pond forest block, roads have now divided the forest interior into several separate interior pieces that are much smaller than the larger forest block. Together these forest interior areas form the essence of our regionally-important forest landscape. We have also identified forested corridors that connect forest interior areas across roads. Forested corridors are critical to enabling animal movement between these interior areas and dramatically increase the value of interior areas for sustainable breeding animal populations. Additional information and a map of interior areas and associated corridors is included in the full Ecological Report.



**Legend**

- Town Boundaries
- Rensselaer Plateau Boundary

**Interior Areas**

- ≥ 5000 acres
- ≥ 2000 acres
- ≥ 1000 acres
- ≥ 700 acres
- ≥ 100 acres

**Fragmented Forest Areas**



**Important Forest-Interior Areas**

Map prepared by:  
Rensselaer Plateau Ecological Features Working Group  
and Amala Consulting, LLC