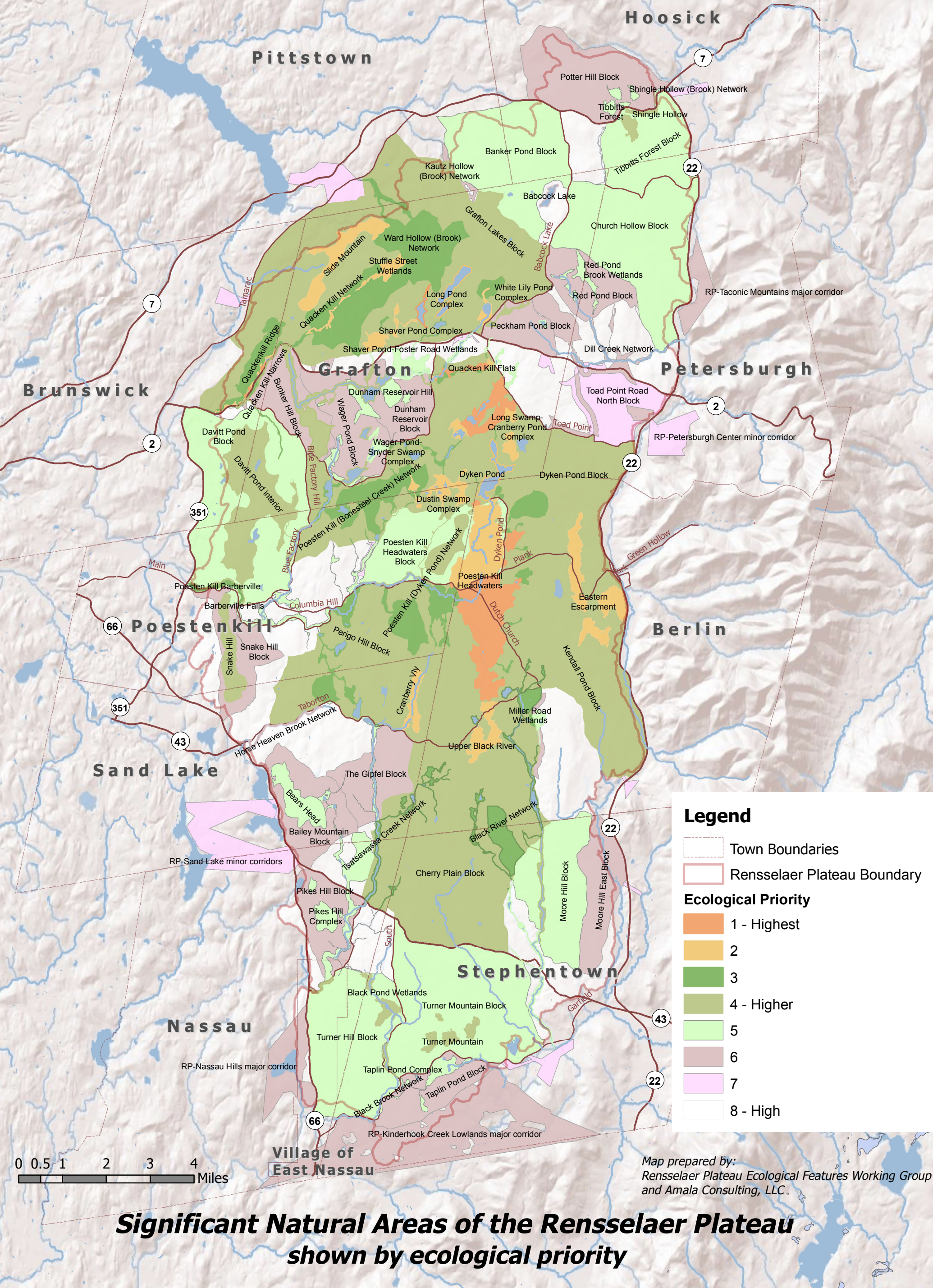


The entire Rensselaer Plateau is ecologically significant. This map shows which areas are most significant based on an analysis of six ecological features: large forests, forest-interior habitat, significant natural communities, important ecosystem complexes, important aquatic networks, and rare plant habitat. Dr. Hunt weighed 17 factors to measure each site's ecological priority, including the rarity, size, quality, and distribution of the six ecological features, and connections to other forested areas. From this, areas were further prioritized by selecting those areas that included the most important sites for each feature in the least amount of area. Natural areas with the highest resulting ecological priority on the Plateau are shown in orange. Water bodies that have a priority level different from their surroundings are shown with an outline in their priority color. A list of these highest ecological priority areas, and a description of each is included in the full Ecological Report. Areas that rank lowest on the Plateau are still important ecologically, but they do not have as many important features as other areas.



Significant Natural Areas of the Rensselaer Plateau
shown by ecological priority