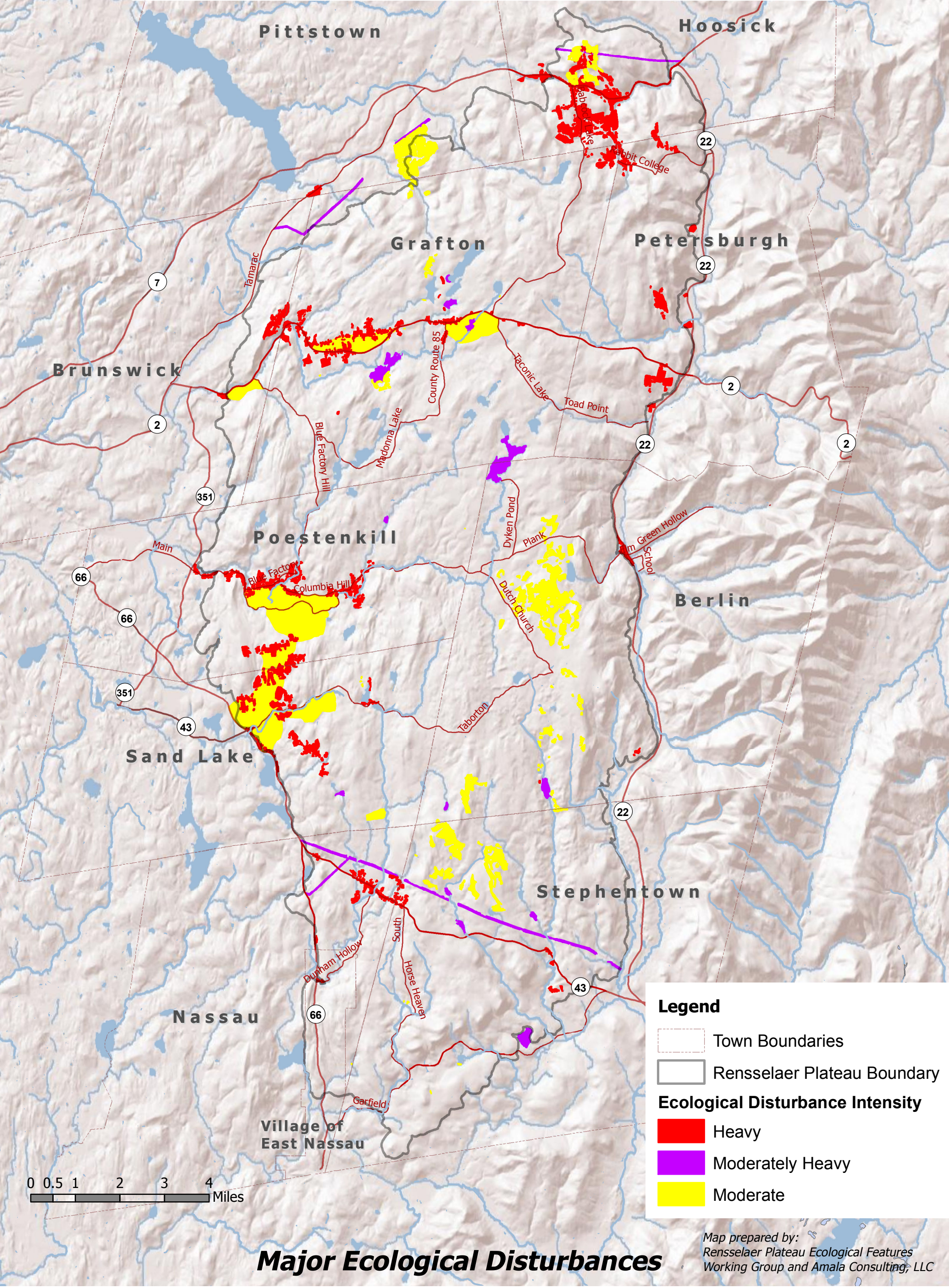


There are isolated regions on the Plateau that have suffered major ecological disturbances caused by substantial alteration of the land. The disturbed areas have lower biodiversity and may not sustain viable populations of native species. On the map, the ecological disturbances are graded according to disturbance type, intensity, and degree of restorability/time-for-recovery. For example, open pit mining for Rensselaer greywacke near Grafton State Park has removed forests and displaced animals to produce an area of low biodiversity that would be difficult to restore—such a region would be characterized as heavily impacted. Areas of moderate impact include some large area clearcuts for timber such that the natural communities were heavily disturbed but the area will still grow back as forest of a new type. Other areas cut for forest management can have even less impact. Reservoirs are identified as moderately heavy because they are dammed.



Legend

- Town Boundaries
- Rensselaer Plateau Boundary
- Ecological Disturbance Intensity**
 - Heavy
 - Moderately Heavy
 - Moderate

Major Ecological Disturbances

Map prepared by:
Rensselaer Plateau Ecological Features
Working Group and Amala Consulting, LLC