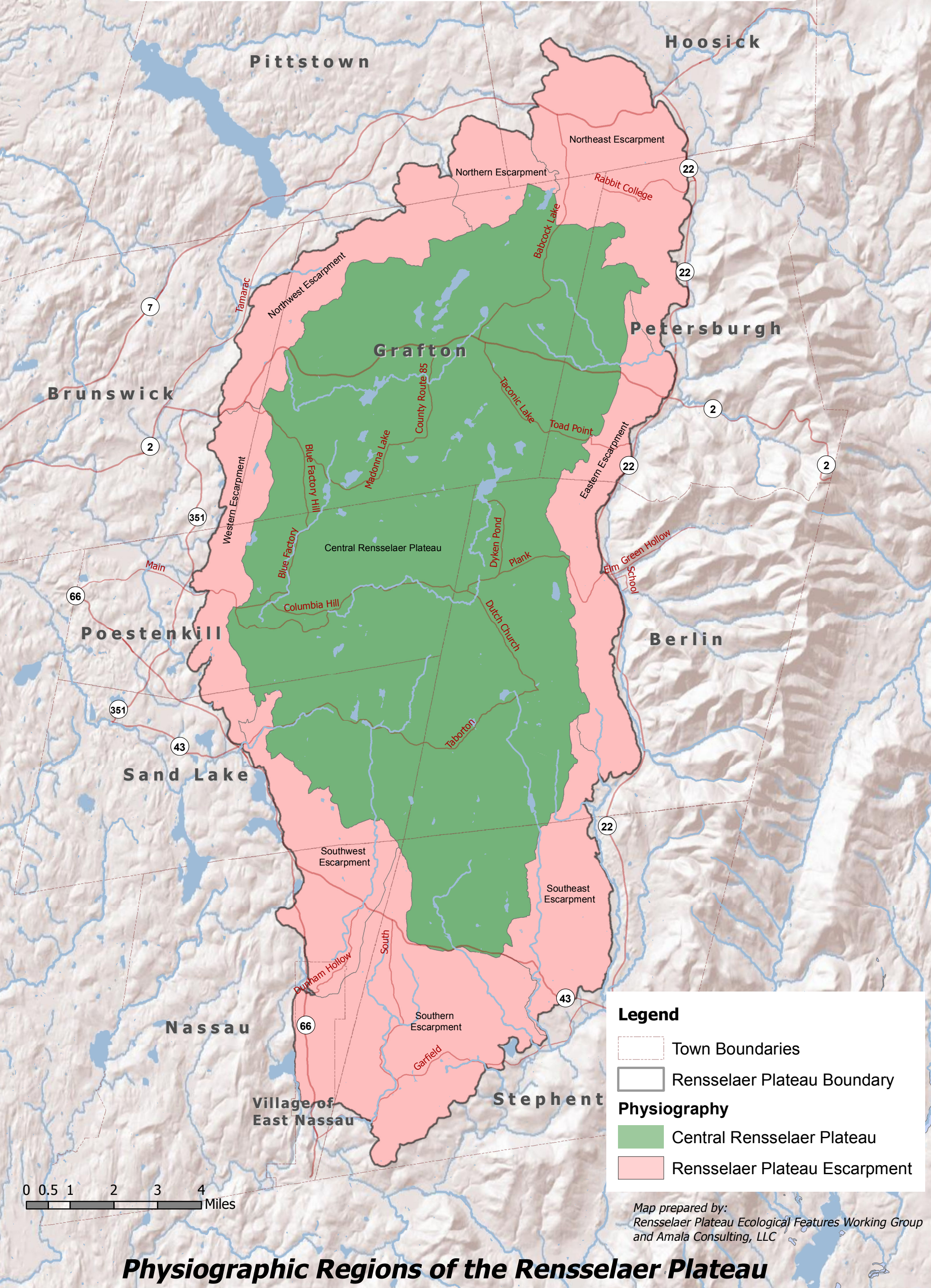


The Rensselaer Plateau is a large high-standing, heavily forested region in eastern New York. It can be divided into two distinct physiographic regions--the Central Plateau and the Plateau Escarpment. The Central Plateau is the high-standing land atop the Plateau that is defined by rugged terrain and thick forests that are dissected by numerous creeks. The Plateau Escarpment is defined by terrain that slopes steeply to adjacent lands. The Plateau Escarpment is further subdivided into distinct regions defined by slope angle, vegetation types, and degree of erosional dissection.



**Legend**

- Town Boundaries
- Rensselaer Plateau Boundary
- Physiography**
  - Central Rensselaer Plateau
  - Rensselaer Plateau Escarpment

Map prepared by:  
Rensselaer Plateau Ecological Features Working Group  
and Amala Consulting, LLC

***Physiographic Regions of the Rensselaer Plateau***